

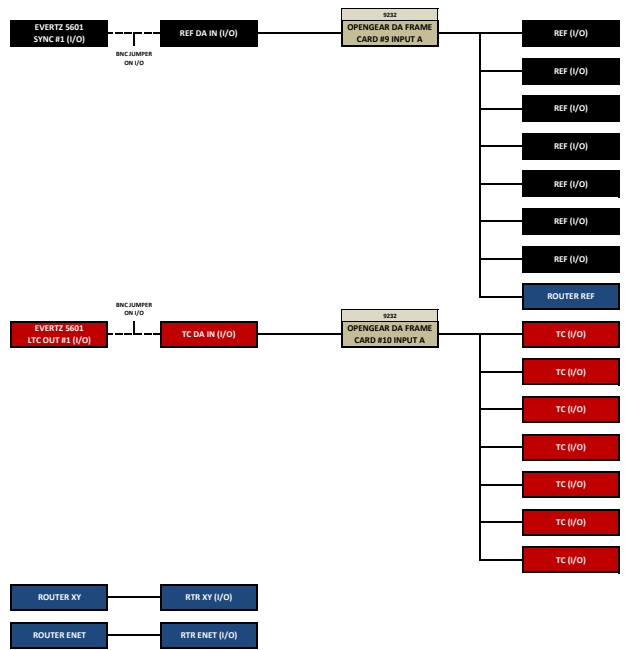
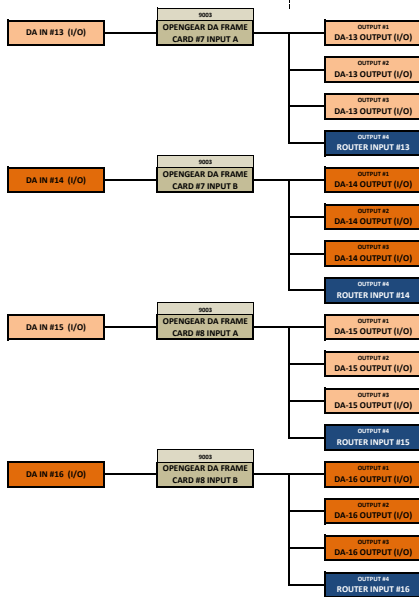
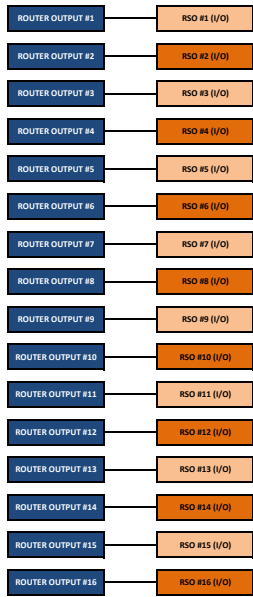
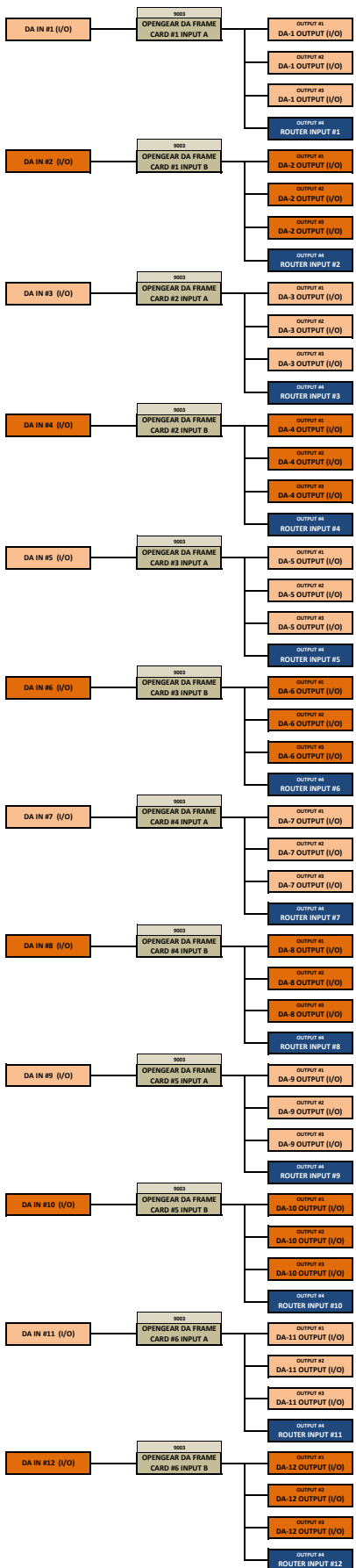
296 Brodhead Rd  
Bethlehem, PA 18017  
(610) 694-9800



28606 Hasley Canyon Rd  
Valencia, CA 91384  
(818) 435-4689



<b>A</b>	DA In 1	DA In 2	DA In 3	DA In 4	DA In 5	DA In 6	DA In 7	DA In 8	DA In 9	DA In 10	DA In 11	DA In 12	DA In 13	DA In 14	DA In 15	DA In 16	<b>A</b>
<b>B</b>	DA-1 OUP.UT	DA-2 OUP.UT	DA-3 OUP.UT	DA-4 OUP.UT	DA-5 OUP.UT	DA-6 OUP.UT	DA-7 OUP.UT	DA-8 OUP.UT	DA-9 OUP.UT	DA-10 OUP.UT	DA-11 OUP.UT	DA-12 OUP.UT	DA-13 OUP.UT	DA-14 OUP.UT	DA-15 OUP.UT	DA-16 OUP.UT	<b>B</b>
<b>C</b>	DA-1 OUP.UT	DA-2 OUP.UT	DA-3 OUP.UT	DA-4 OUP.UT	DA-5 OUP.UT	DA-6 OUP.UT	DA-7 OUP.UT	DA-8 OUP.UT	DA-9 OUP.UT	DA-10 OUP.UT	DA-11 OUP.UT	DA-12 OUP.UT	DA-13 OUP.UT	DA-14 OUP.UT	DA-15 OUP.UT	DA-16 OUP.UT	<b>C</b>
<b>D</b>	DA-1 OUP.UT	DA-2 OUP.UT	DA-3 OUP.UT	DA-4 OUP.UT	DA-5 OUP.UT	DA-6 OUP.UT	DA-7 OUP.UT	DA-8 OUP.UT	DA-9 OUP.UT	DA-10 OUP.UT	DA-11 OUP.UT	DA-12 OUP.UT	DA-13 OUP.UT	DA-14 OUP.UT	DA-15 OUP.UT	DA-16 OUP.UT	<b>D</b>
<b>E</b>	RSO 1	RSO 2	RSO 3	RSO 4	RSO 5	RSO 6	RSO 7	RSO 8	RSO 9	RSO 10	RSO 11	RSO 12	RSO 13	RSO 14	RSO 15	RSO 16	<b>E</b>
<b>F</b>	SYNCOUT1	REF DA IN	REF	REF	REF	REF	REF	REF	REF	TCOUT	TCDA IN	TC	TC	TC	TC	TC	<b>F</b>
<b>G</b>	RTRXY	RTR ENET	DRAWMER IN LEFT	DRAWMER IN RIGHT	DRAWMER OUT 1 LEFT	DRAWMER OUT 1 RIGHT	DRAWMER OUT 2 LEFT	DRAWMER OUT 2 RIGHT	DRAWMER OUT 3 LEFT	DRAWMER OUT 3 RIGHT	DRAWMER OUT 4 LEFT	DRAWMER OUT 4 RIGHT	DRAWMER OUT 5 LEFT	DRAWMER OUT 5 RIGHT	DRAWMER OUT 6 LEFT	DRAWMER OUT 6 RIGHT	<b>G</b>



## Clark Media Compact Engineering System

### Case 1 Main 8-RU Engineering Cube

- 1 Evertz MSG-5601
- 1 Harris 16 x 16 HD-SDI Router
- 1 1 - Cobalt 2RU frame with 2 x PS
- 8 Cobalt 9003 Dual 1x4 DA  
(provides 3-copies of 16 DA to rear I/O)
- 1 1 Cobalt TC DA
- 1 1 Cobalt REF-DA
- 1 Drawmer 6-Output Stereo DA

### Case 2 10-RU Shading Cube - shallow depth cube

- 1 Boland PVB-17 Rack Mount HD Monitor
- 1 Leader LV-5330 HD Scope
- 1 1RU - Harris RCP-16 Panel

### Case 3 Cable Rolling Workbox

- 2 25' AC
- 2 50' AC
- 4 Power Strips
- 2 Spare 6' D-Cords -
  
- 1 Black Gaffer
- 1 Gray Gaffer
  
- 6 3' BNC
- 10 6' BNC
- 10 10' BNC
- 6 25' BNC
- 4 50' BNC
  
- 4 12.5' 12-wire HD
- 2 25' 12-wire HD
  
- 2 XLR-Female to Dual XLR-Male Splitter
- 6 10' XLR Stereo pairs
- 6 10' XLR Audio
- 6 25' XLR Audio
- 4 50' XLR Audio

**Case 4 Support Rolling Workbox**

- 2 16x1 panels - Dest 15 and 16
- 2 Cobalt drop-down HD - DA
- 2 AJA Hi-5
- 2 AJA HD-AMA Embedder
- 2 Sony Headphones
- 2 Videotek DA
- 1 Fostex

**1 Custom Connector Kit to Include**

2	Sescom IL-19
2	Sescom IL-29
2	Shure Phase Reversers
2	Shure Line Input Adapter
4	XLR Male Bodge Plugs
4	XLR Female Bodge Plugs
3	AES - F-XLR to BNC Transformer
3	AES - M-XLR to BNC Transformer
6	Female XLR Barrels
6	Male XLR Barrels
8	RCA Barrels
8	Female-BNC to Male-RCA
8	Male BNC to Female RCA
4	BNC - Male to dual BNC-F 'T' splitter
25	BNC Barrels
1	Shure Tone Generator
12	75-ohm BNC Terminators
8	BNC Elbows