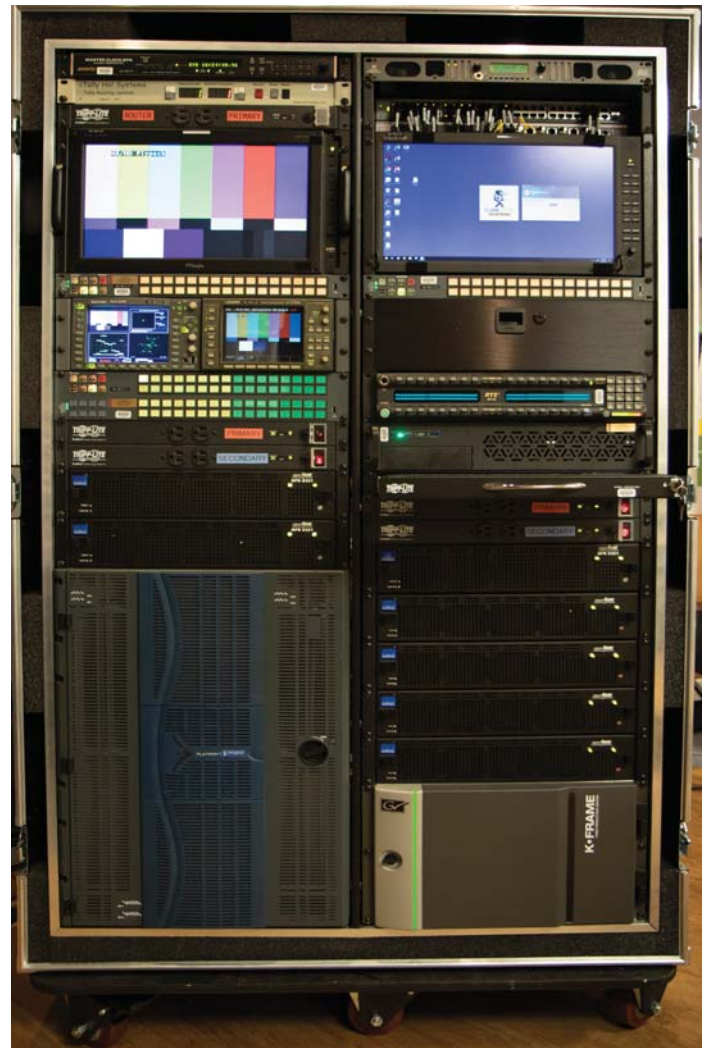
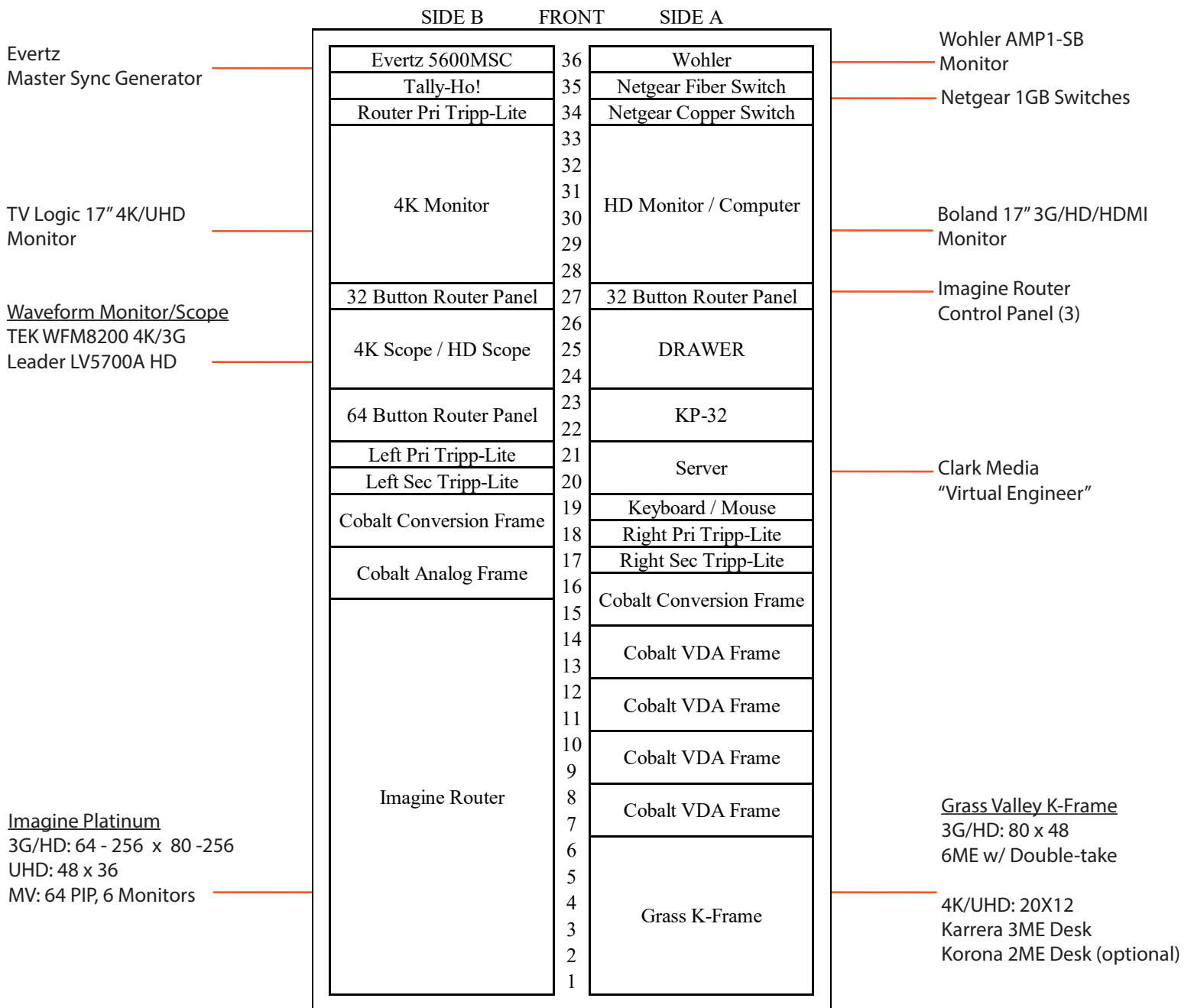


Grass Valley Karerra / Imagine Matrix 4K/3G/HD Flypack

The power of a mobile unit in a double-wide rack

- *UHD / 3G / HD Capable System
- *High-Dynamic Range available in UHD and HD!
- *UHD Frame Rates: 50 / 59.94 / 60
- *HD Frame Rates:
 - 720p: 50/59.94/60
 - 1080i: 25/29.97/30
 - 1080psf: 23.98/24/25/29.97/30
 - 1080p: (A&B) 50/59.94/60
- *Compact System
 - 77" H x 45" W x 40" Deep
 - 32" deep (with covers off - should fit through most doorways)
- *Pre-Wired to an I/O panel in rear of cube for easy connectivity.
- *Grass Valley Karerra K-Frame 3G/HD 80 x 48 6ME with DoubleTake
 - UHD: 20 x 12
- *Imagine SDI Matrix - 256 x 226 with 64 PIP Multi-viewer (6 monitors)
- *Clark Media Virtual Engineer - System has TeamViewer installed. A Clark engineer can remotely access the system to assist with troubleshooting
- *Power: 5x 120vac 15 AMP Circuits - UPS protection included





revised 7/9/2018 GK

REAR BNC I/O: SYSTEM INPUTS

A-1	4K 1 - In 1	4K 1 - In 2	4K 1 - In 3	4K 1 - In 4	4K 2 - In 5	4K 2 - In 6	4K 2 - In 7	4K 2 - In 8	4K 3 - In 9	4K 3 - In 10	4K 3 - In 11	4K 3 - In 12	4K 4 - In 13	4K 4 - In 14	4K 4 - In 15	4K 4 - In 16
	1	2	3	4	5	6	7	8	9	10	11	12	13	14	15	16
A-2	4K 5 - In 17	4K 5 - In 18	4K 5 - In 19	4K 5 - In 20	4K 6 - In 21	4K 6 - In 22	4K 6 - In 23	4K 6 - In 24	4K 7 - In 25	4K 7 - In 26	4K 7 - In 27	4K 7 - In 28	4K 8 - In 29	4K 8 - In 30	4K 8 - In 31	4K 8 - In 32
A-3	4K 9 - In 33	4K 9 - In 34	4K 9 - In 35	4K 9 - In 36	4K 10 - In 37	4K 10 - In 38	4K 10 - In 39	4K 10 - In 40	4K 11 - In 41	4K 11 - In 42	4K 11 - In 43	4K 11 - In 44	4K 12 - In 45	4K 12 - In 46	4K 12 - In 47	4K 12 - In 48
	1	2	3	4	5	6	7	8	9	10	11	12	13	14	15	16
A-4	4K 13 - In 49	4K 13 - In 50	4K 13 - In 51	4K 13 - In 52	4K 14 - In 53	4K 14 - In 54	4K 14 - In 55	4K 14 - In 56	4K 15 - In 57	4K 15 - In 58	4K 15 - In 59	4K 15 - In 60	4K 16 - In 61	4K 16 - In 62	4K 16 - In 63	4K 16 - In 64
A-5	4K 17 - In 65	4K 17 - In 66	4K 17 - In 67	4K 17 - In 68	4K 18 - In 69	4K 18 - In 70	4K 18 - In 71	4K 18 - In 72	4K 19 - In 73	4K 19 - In 74	4K 19 - In 75	4K 19 - In 76	4K 20 - In 77	4K 20 - In 78	4K 20 - In 79	4K 20 - In 80
	1	2	3	4	5	6	7	8	9	10	11	12	13	14	15	16
A-6	4K 21 - In 81	4K 21 - In 82	4K 21 - In 83	4K 21 - In 84	4K 22 - In 85	4K 22 - In 86	4K 22 - In 87	4K 22 - In 88	4K 23 - In 89	4K 23 - In 90	4K 23 - In 91	4K 23 - In 92	4K 24 - In 93	4K 24 - In 94	4K 24 - In 95	4K 24 - In 96
A-7	4K 25 - In 97	4K 25 - In 98	4K 25 - In 99	4K 25 - In 100	4K 26 - In 101	4K 26 - In 102	4K 26 - In 103	4K 26 - In 104	4K 27 - In 105	4K 27 - In 106	4K 27 - In 107	4K 27 - In 108	4K 28 - In 109	4K 28 - In 110	4K 28 - In 111	4K 28 - In 112
	1	2	3	4	5	6	7	8	9	10	11	12	13	14	15	16
A-8	4K 29 - In 113	4K 29 - In 114	4K 29 - In 115	4K 29 - In 116	4K 30 - In 117	4K 30 - In 118	4K 30 - In 119	4K 30 - In 120	4K 31 - In 121	4K 31 - In 122	4K 31 - In 123	4K 31 - In 124	4K 32 - In 125	4K 32 - In 126	4K 32 - In 127	4K 32 - In 128
A-9	4K 33 - In 129	4K 33 - In 130	4K 33 - In 131	4K 33 - In 132	4K 34 - In 133	4K 34 - In 134	4K 34 - In 135	4K 34 - In 136	4K 35 - In 137	4K 35 - In 138	4K 35 - In 139	4K 35 - In 140	4K 36 - In 141	4K 36 - In 142	4K 36 - In 143	4K 36 - In 144
	1	2	3	4	5	6	7	8	9	10	11	12	13	14	15	16
A-10	RTR In #145	RTR In #146	RTR In #147	RTR In #148	RTR In #149	RTR In #150	RTR In #151	RTR In #152	RTR In #153	RTR In #154	RTR In #155	RTR In #156	RTR In #157	RTR In #158	RTR In #159	RTR In #160
A-11	RTR In #161	RTR In #162	RTR In #163	RTR In #164	RTR In #165	RTR In #166	RTR In #167	RTR In #168	RTR In #169	RTR In #170	RTR In #171	RTR In #172	RTR In #173	RTR In #174	RTR In #175	RTR In #176
	1	2	3	4	5	6	7	8	9	10	11	12	13	14	15	16
A-12	RTR In #177	RTR In #178	RTR In #179	RTR In #180	RTR In #181	RTR In #182	RTR In #183	RTR In #184	RTR In #185	RTR In #186	RTR In #187	RTR In #188	RTR In #189	RTR In #190	RTR In #191	RTR In #192
A-13	MV-A Out-1	MV-A Out-2	MV-A Out-3	MV-A Out-4	MV-A Out-5	MV-A Out-6	MV-B Out-1	MV-B Out-2	MV-B Out-3	MV-B Out-4	MV-B Out-5	MV-B Out-6	X	X	HD-Black	HD-TEST
	1	2	3	4	5	6	7	8	9	10	11	12	13	14	15	16
A-14	RTR In #193	RTR In #194	RTR In #195	RTR In #196	RTR In #197	RTR In #198	RTR In #199	RTR In #200	RTR In #201	RTR In #202	RTR In #203	RTR In #204	RTR In #205	RTR In #206	RTR In #207	RTR In #208
A-15	SW Out 1	SW Out 2	SW Out 3	SW Out 4	SW Out 5	SW Out 6	SW Out 7	SW Out 8	SW Out 9	SW Out 10	SW Out 11	SW Out 12	SW Out 13	SW Out 14	SW Out 15	SW Out 16
	1	2	3	4	5	6	7	8	9	10	11	12	13	14	15	16
A-16	RTR In #209	RTR In #210	RTR In #211	RTR In #212	RTR In #213	RTR In #214	RTR In #215	RTR In #216	RTR In #217	RTR In #218	RTR In #219	RTR In #220	RTR In #221	RTR In #222	RTR In #223	RTR In #224
A-17	SW Out 17	SW Out 18	SW Out 19	SW Out 20	SW Out 21	SW Out 22	SW Out 23	SW Out 24	SW Out 25	SW Out 26	SW Out 27	SW Out 28	SW Out 29	SW Out 30	SW Out 31	SW Out 32
	1	2	3	4	5	6	7	8	9	10	11	12	13	14	15	16
A-18	RTR In #225	RTR In #226	RTR In #227	RTR In #228	RTR In #229	RTR In #230	RTR In #231	RTR In #232	RTR In #233	RTR In #234	RTR In #235	RTR In #236	RTR In #237	RTR In #238	RTR In #239	RTR In #240
A-19	SW Out 33	SW Out 34	SW Out 35	SW Out 36	SW Out 37	SW Out 38	SW Out 39	SW Out 40	SW Out 41	SW Out 42	SW Out 43	SW Out 44	SW Out 45	SW Out 46	SW Out 47	SW Out 48
	1	2	3	4	5	6	7	8	9	10	11	12	13	14	15	16
A-20	RTR In #241	RTR In #242	RTR In #243	RTR In #244	RTR In #245	RTR In #246	RTR In #247	RTR In #248	RTR In #249	RTR In #250	RTR In #251	RTR In #252	RTR In #253	RTR In #254	RTR In #255	RTR In #256

REAR BNC I/O: DA ISO OUTPUTS

A-21	4K 1-DA 1	4K 1-DA 2	4K 1-DA 3	4K 1-DA 4	4K 2-DA 5	4K 2-DA 6	4K 2-DA 7	4K 2-DA 8	4K 3-DA 9	4K 3-DA 10	4K 3-DA 11	4K 3-DA 12	4K 4-DA 13	4K 4-DA 14	4K 4-DA 15	4K 4-DA 16
	1	2	3	4	5	6	7	8	9	10	11	12	13	14	15	16
A-22	4K 1-DA 1	4K 1-DA 2	4K 1-DA 3	4K 1-DA 4	4K 2-DA 5	4K 2-DA 6	4K 2-DA 7	4K 2-DA 8	4K 3-DA 9	4K 3-DA 10	4K 3-DA 11	4K 3-DA 12	4K 4-DA 13	4K 4-DA 14	4K 4-DA 15	4K 4-DA 16
A-23	4K 5-DA 17	4K 5-DA 18	4K 5-DA 19	4K 5-DA 20	4K 6-DA 21	4K 6-DA 22	4K 6-DA 23	4K 6-DA 24	4K 7-DA 25	4K 7-DA 26	4K 7-DA 27	4K 7-DA 28	4K 8-DA 29	4K 8-DA 30	4K 8-DA 31	4K 8-DA 32
	1	2	3	4	5	6	7	8	9	10	11	12	13	14	15	16
A-24	4K 5-DA 17	4K 5-DA 18	4K 5-DA 19	4K 5-DA 20	4K 6-DA 21	4K 6-DA 22	4K 6-DA 23	4K 6-DA 24	4K 7-DA 25	4K 7-DA 26	4K 7-DA 27	4K 7-DA 28	4K 8-DA 29	4K 8-DA 30	4K 8-DA 31	4K 8-DA 32
A-25	4K 9-DA 33	4K 9-DA 34	4K 9-DA 35	4K 9-DA 36	4K 10-DA 37	4K 10-DA 38	4K 10-DA 39	4K 10-DA 40	4K 11-DA 41	4K 11-DA 42	4K 11-DA 43	4K 11-DA 44	4K 12-DA 45	4K 12-DA 46	4K 12-DA 47	4K 12-DA 48
	1	2	3	4	5	6	7	8	9	10	11	12	13	14	15	16
A-26	4K 9-DA 33	4K 9-DA 34	4K 9-DA 35	4K 9-DA 36	4K 10-DA 37	4K 10-DA 38	4K 10-DA 39	4K 10-DA 40	4K 11-DA 41	4K 11-DA 42	4K 11-DA 43	4K 11-DA 44	4K 12-DA 45	4K 12-DA 46	4K 12-DA 47	4K 12-DA 48
A-27	4K 13-DA 49	4K 13-DA 50	4K 13-DA 51	4K 13-DA 52	4K 14-DA 53	4K 14-DA 54	4K 14-DA 55	4K 14-DA 56	4K 15-DA 57	4K 15-DA 58	4K 15-DA 59	4K 15-DA 60	4K 16-DA 61	4K 16-DA 62	4K 16-DA 63	4K 16-DA 64
	1	2	3	4	5	6	7	8	9	10	11	12	13	14	15	16
A-28	4K 13-DA 49	4K 13-DA 50	4K 13-DA 51	4K 13-DA 52	4K 14-DA 53	4K 14-DA 54	4K 14-DA 55	4K 14-DA 56	4K 15-DA 57	4K 15-DA 58	4K 15-DA 59	4K 15-DA 60	4K 16-DA 61	4K 16-DA 62	4K 16-DA 63	4K 16-DA 64
A-29	4K 17-DA 65	4K 17-DA 66	4K 17-DA 67	4K 17-DA 68	4K 18-DA 69	4K 18-DA 70	4K 18-DA 71	4K 18-DA 72	4K 19-DA 73	4K 19-DA 74	4K 19-DA 75	4K 19-DA 76	4K 20-DA 77	4K 20-DA 78	4K 20-DA 79	4K 20-DA 80
	1	2	3	4	5	6	7	8	9	10	11	12	13	14	15	16
A-30	4K 17-DA 65	4K 17-DA 66	4K 17-DA 67	4K 17-DA 68	4K 18-DA 69	4K 18-DA 70	4K 18-DA 71	4K 18-DA 72	4K 19-DA 73	4K 19-DA 74	4K 19-DA 75	4K 19-DA 76	4K 20-DA 77	4K 20-DA 78	4K 20-DA 79	4K 20-DA 80

